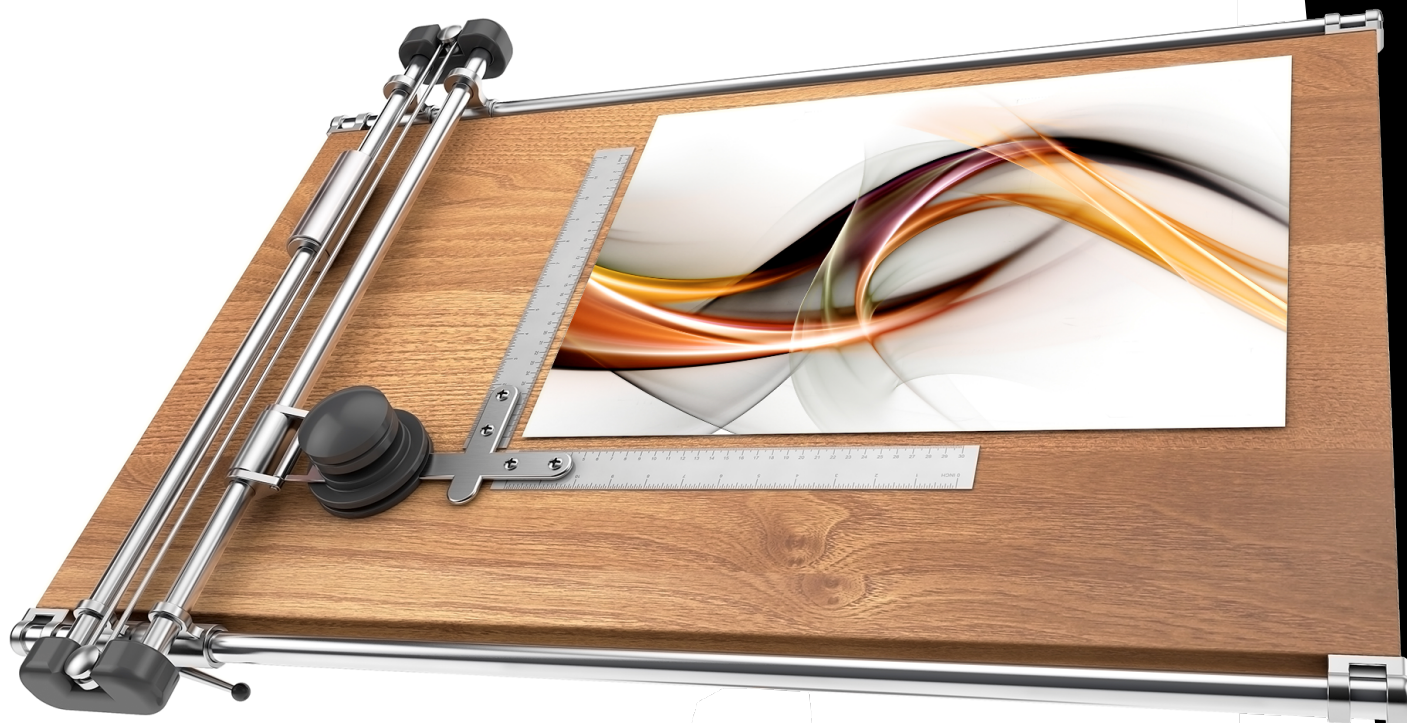


From BIM to Digital Twin for property management

Kort om NTI



- Grunnlagt i 1945
- Pålitelig rådgiver og leverandør til byggenæringen og industrien i snart 80 år
- Fra produsent og leverandør av tegnemaskiner til ledende rådgiver innen bærekraftig digitalisering
- Mer enn 600 ansatte i 8 land
- Hovedkontor i København
- 62 ansatte i Norge



95 %

71 %

82 %



Hva er en «Digital tvilling»

En dynamisk, oppdatert kopi av en fysisk ressurs som samler design, konstruksjon og driftsdata.

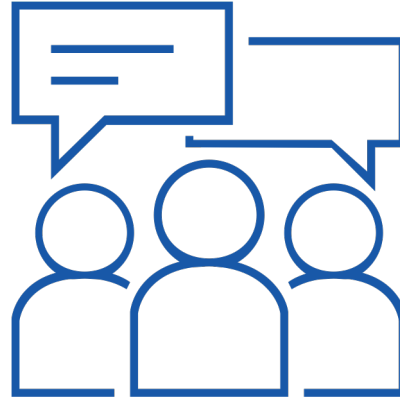
Med tillegg av sanntids operasjonelle data, får digitale tvillinger den adferdsbevissthet som er nødvendig for å simulere, forutsi og informere før beslutninger tas basert på virkelige forhold.



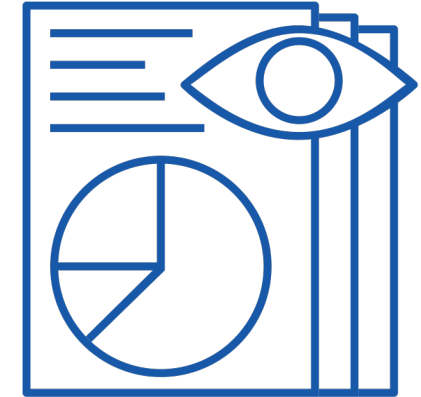
Business mulighet med Tandem for rådgivere



Tilby levering av digital tvilling som en betalt tjeneste



Bygg langvarige kundeforhold med flerårige kontrakter



Få et unikt konkurransefortrinn. Vinn flere kontrakter.

Business mulighet med Tandem for eier



Ta kontroll for å
oppnå bedre resultater



Ta kontroll over
driftsdokumentasjon



Reduser
driftskostnadene



Fremtidssikre
eiendommene

.....

Demo Autodesk Tandem

Then I want to hand over to
Siva Koppula

Customer Adoption Specialist
AUTODESK TANDEM™



Safe Harbor Statement

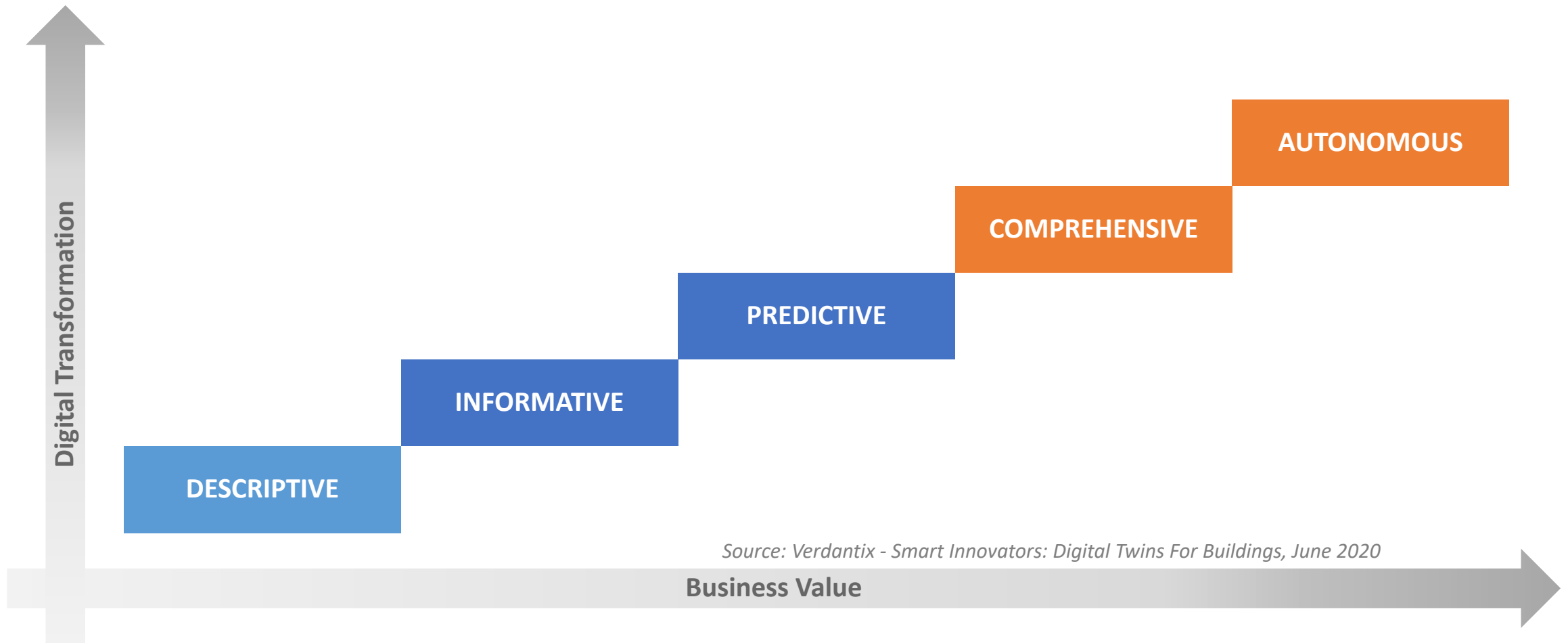
The presentations today may contain forward-looking statements about our strategies, products, future results, performance or achievements, financial, operational and otherwise, including statements about our strategic priorities, business model transition, and guidance for the fiscal year 2023 and beyond; our long term financial and operational goals; our M&A strategy; and our capital allocation initiatives. These statements reflect management's current expectations, estimates and assumptions based on the information currently available to us. These forward-looking statements are not guarantees of future performance and involve significant risks, uncertainties and other factors that may cause our actual results, performance or achievements to be materially different from results, performance or achievements expressed or implied by the forward-looking statements contained in these presentations, such as a failure to successfully integrate acquired businesses; developments in the COVID-19 pandemic and the resulting impact on our business and operations; general market, political, economic, and business conditions; complete transitions to new business model and markets; failure of the construction industry to grow as anticipated; failure to develop new products; failure to successfully expand adoption of our products; and failure of product changes to have the desired benefits.

A discussion of factors that may affect future results is contained in our most recent Form 10-K and Form 10-Q filings available at www.sec.gov, including descriptions of the risk factors that may impact us and the forward-looking statements made in these presentations. The forward-looking statements made in these presentations are being made as of the time and date of their live presentation. If these presentations are reviewed after the time and date of their live presentation, even if subsequently made available by us, on our website or otherwise, these presentations may not contain current or accurate information. We disclaim any obligation to update or revise any forward-looking statement based on new information, future events or otherwise.

Statements regarding planned or future development efforts for our products and services are not intended to be a promise or guarantee of future availability of products, services, or features but merely reflect our current plans and based on factors currently known to us. Purchasing decisions should not be made based upon reliance on these statements.



Digital Twin Maturity

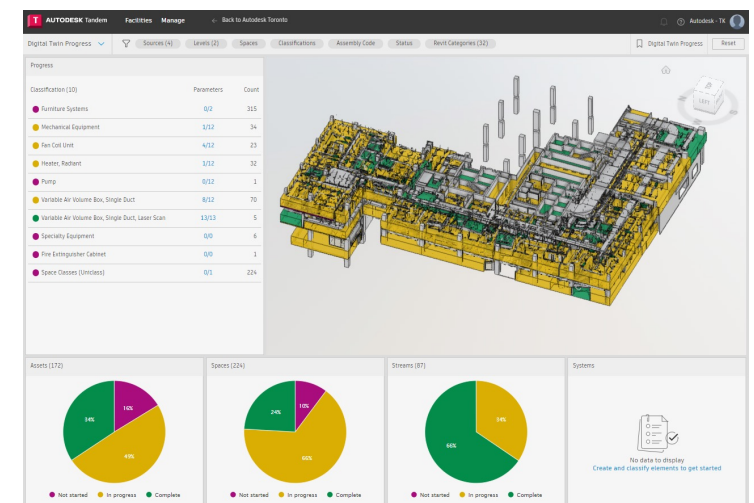
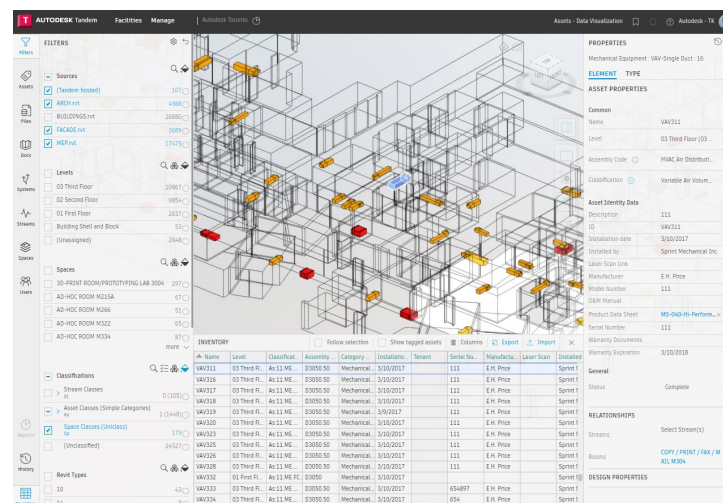
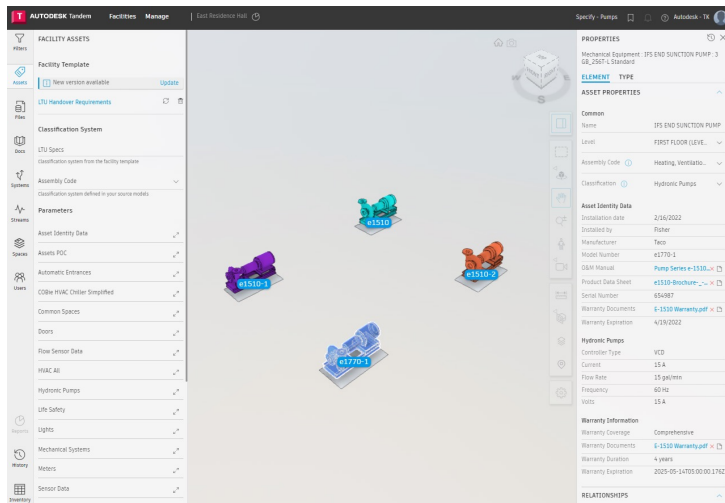


Twin Building in Tandem

Specify

Capture

Verify (Future)

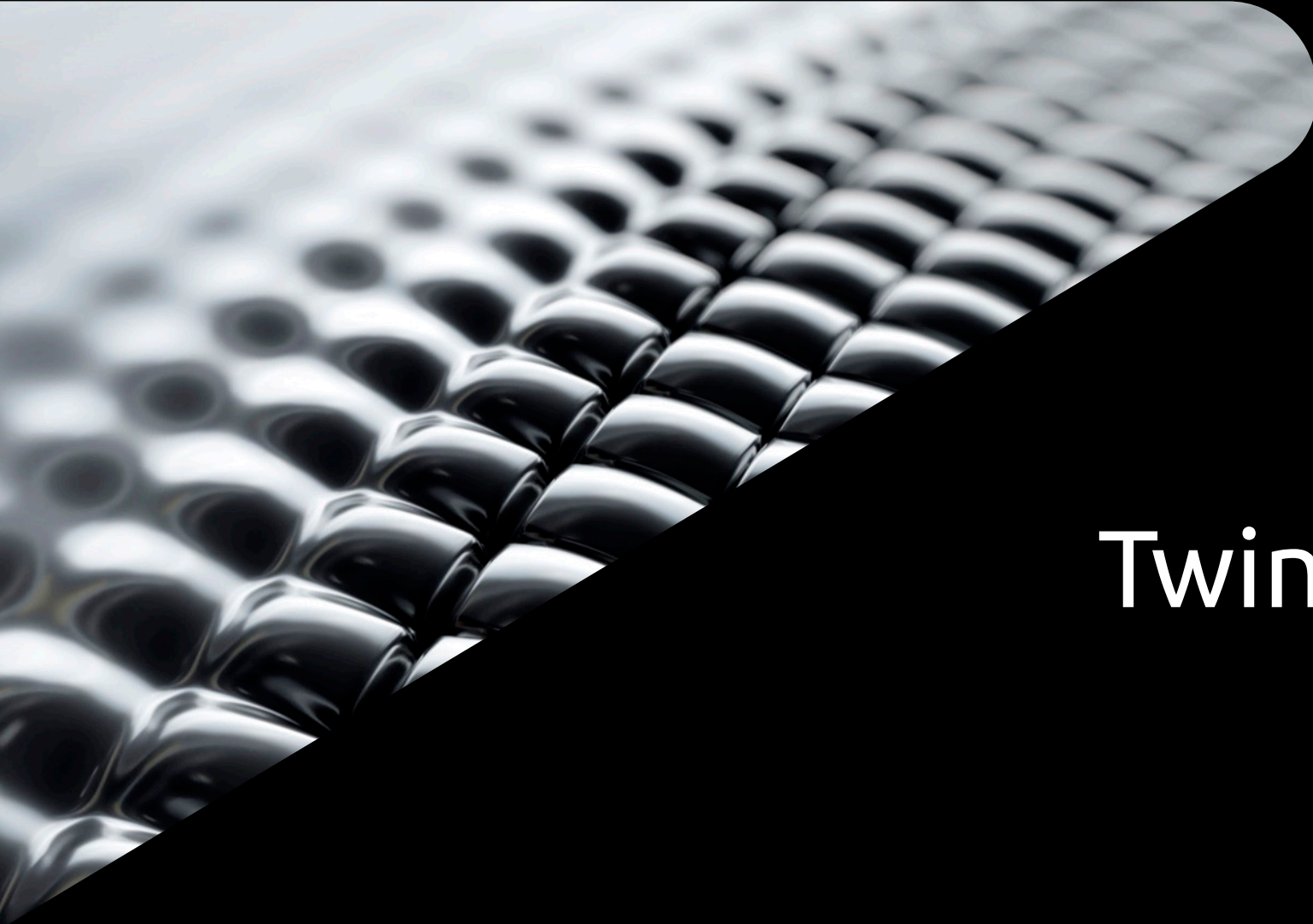


- Establish **data requirements**
- **Structure and organize** the data
- **Identify and define** your assets, spaces, streams and systems

- Create **systems** of assets
- Contribute to the **structured data**
- Establish **relationships** between assets, spaces, systems, streams

- See a **holistic view** of the facility
- Review for **data completion**
- Understand **changes** in your data over time





Twin Building Demo



CLASSIFICATION SYSTEMS

[Download](#) [+ Add Classification System](#)

Default (Masterformat) ▾

- To add or edit a custom classification system in your account:
1. Select an existing classification system and click [Download](#). This exports an editable template.
 2. Open the template in Excel or other spreadsheet app and edit as needed.
 3. Click [Add Classification System](#) to create a new system or Update to revise the selected system based on your edits.


Code	Description	Level
> 01 00 00	General Requirements	1
> 02 00 00	Existing Conditions	1
> 03 00 00	Concrete	1
> 04 00 00	Masonry	1
> 05 00 00	Metals	1
> 06 00 00	Wood, Plastics, and Composites	1
> 07 00 00	Thermal and Moisture Protection	1
> 08 00 00	Openings	1
> 09 00 00	Finishes	1
> 10 00 00	Specialties	1
> 11 00 00	Equipment	1
> 12 00 00	Furnishings	1
> 13 00 00	Special Construction	1
> 14 00 00	Conveying Equipment	1
> 21 00 00	Fire Suppression	1
> 22 00 00	Plumbing	1
> 23 00 00	Heating, Ventilating, and Air-Conditioning (HVAC)	1

[Specify Asset Data Requirements](#)

OWNED BY Tandem CAS | SHARED WITH ME


Create New Facility

List Grid




Student accommodation

Project Name: Lawrence Technology University
Owner: Autodesk Tandem
Address: Southfield, MI 48075, Detroit, USA




JKR Hospital

Project Name: JKR Hospital
Owner: Autodesk
Address: Malaysia



IDC9 GYM

Project Name: IDC9 GYM
Owner: Intel
Address:



Plant

Project Name: Semiconductor Plant
Owner:
Address: Germany

Student accommodation

OPEN

Recent Changes

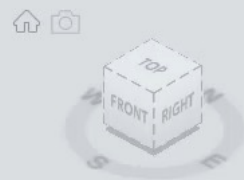
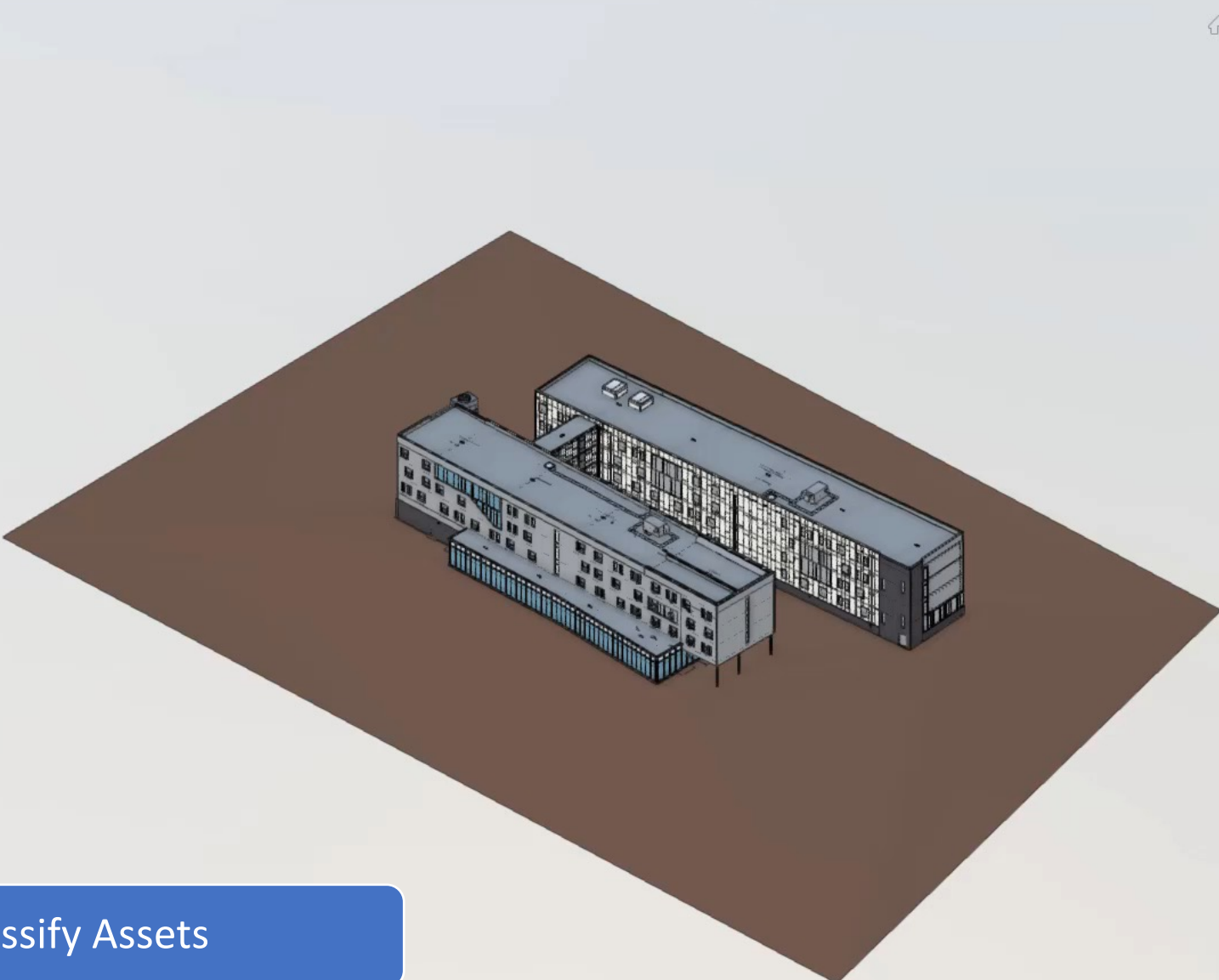
11/7/2022 - 11/14/2022

All Sources

- LTU2022 - Arch.rvt
11/10/2022, 12:27:43 AM
Siva Koppula
- LTU2022 - MEP.rvt
11/10/2022, 12:27:43 AM
Siva Koppula
- LTU2022 - MEP.rvt
11/10/2022, 12:27:08 AM
Siva Koppula
- (Tandem hosted)
11/10/2022, 12:27:02 AM
Siva Koppula
- LTU2022 - MEP.rvt
11/10/2022, 12:27:01 AM
Siva Koppula
- LTU2022 - Structure.rvt

Connect to BIM Data

- Filters
- Assets
- Files
- Docs
- Streams
- Users
- Reports
- History
- Inventory



- Home
- Camera
- Reset View
- Hand
- Search
- Person
- Screen
- Measure
- Layers
- Settings

PROPERTIES

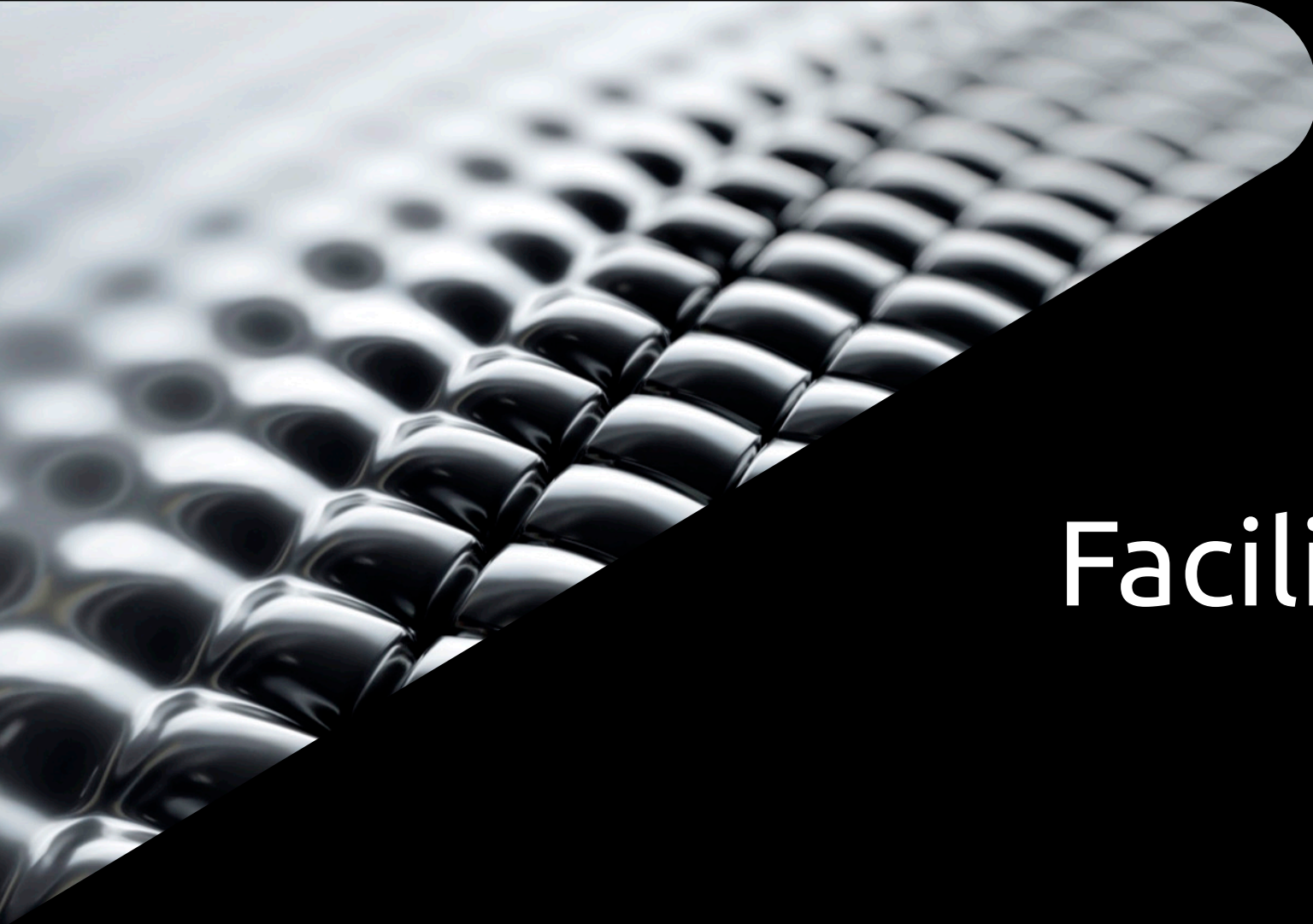
No items selected

Use the left hand panels, viewer, or inventory table to make a selection

Or

[Select elements matching current filter](#)

Identify and Classify Assets



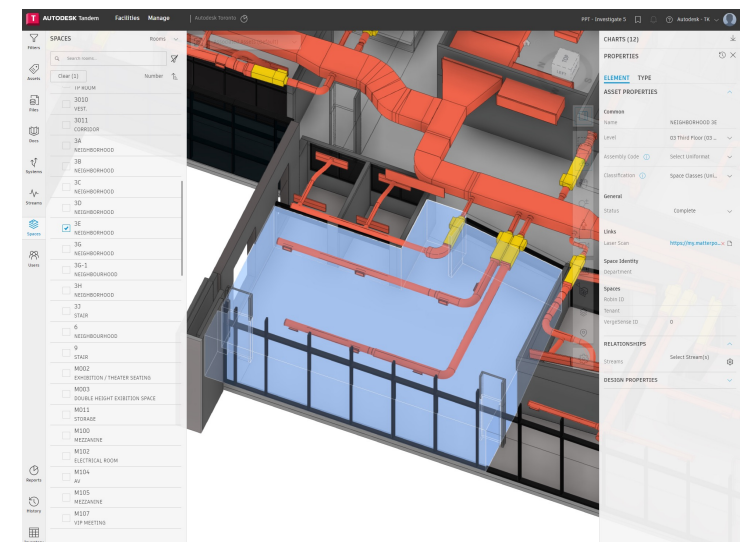
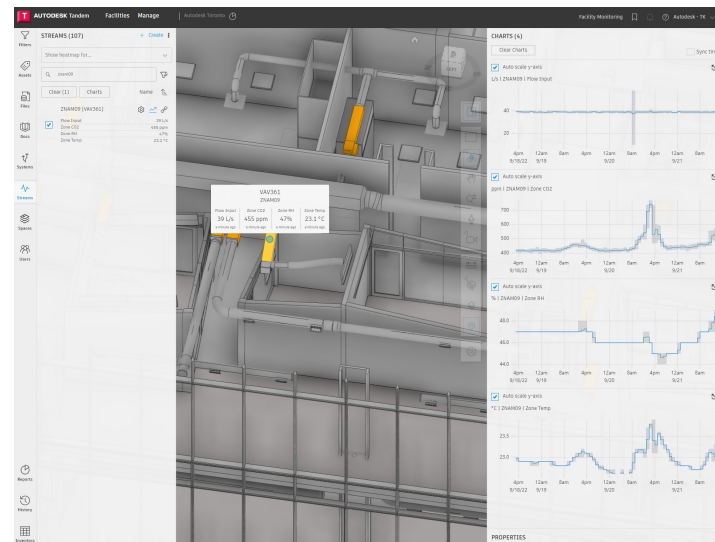
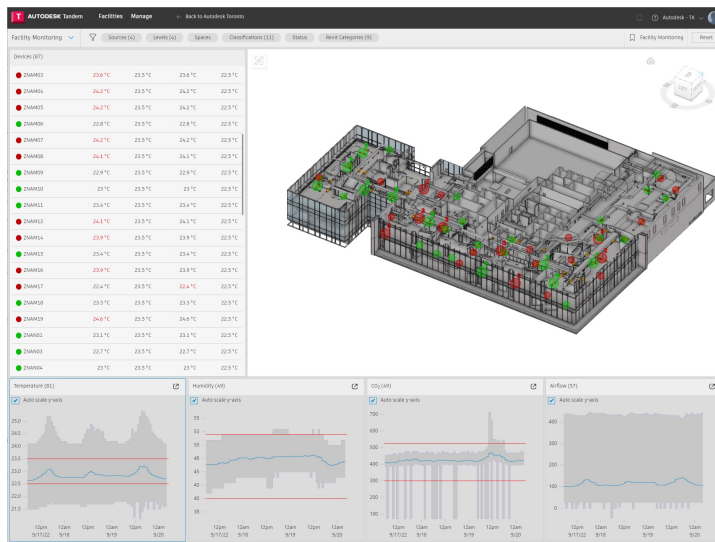
Facility Monitoring

Facility Monitoring in Tandem (beta) coming soon..

Discover (future)

Investigate

Act



- **Tune in** to what needs attention via **Dashboards**
- **Focus** on what matters most
- Get to **know your facility** from the inside out

- Jump to the **right data** and drill in
- **Trace relationships**, putting any investigation in context
- **Communicate effectively** with your stakeholders

- Turn your **insights into action**
- **Don't waste time** digging for documentation
- Make **informed decisions**

STREAMS + Create

Filters

Show heatmap for...

Assets Search

Charts Host

ZNAQ05
Zone Temp 23.7 °C

MaRS - Steelcase - Height-Adjustable Desk - Series 7 - Rectangular 0 of 1

SensorKit-03

Local CO2-1	732 ppm
Local CO2-2	730 ppm
Local Humidity	33%
Local Light	19 lm
Local Motion	20
Local Pressure	69.5 kPa
Local Sound	48dB
Local Temperature	24 °C

MaRS - Steelcase - Height-Adjustable Desk - Series 7 - Rectangular 0 of 1

SensorKit-04

Local CO2-1	555 ppm
Local CO2-2	545 ppm
Local Humidity	28%
Local Light	28 lm
Local Motion	5
Local Pressure	68.5 kPa
Local Sound	56dB
Local Temperature	23 °C

Steelcase - Height-Adjustable Desk - Series 7 - Rectangular Base 0 of 1

SensorKit-10

Local CO2-1	573 ppm
Local CO2-2	565 ppm
Local Humidity	57%

Files

Docs

Systems

Streams

Spaces

Users

Reports

History

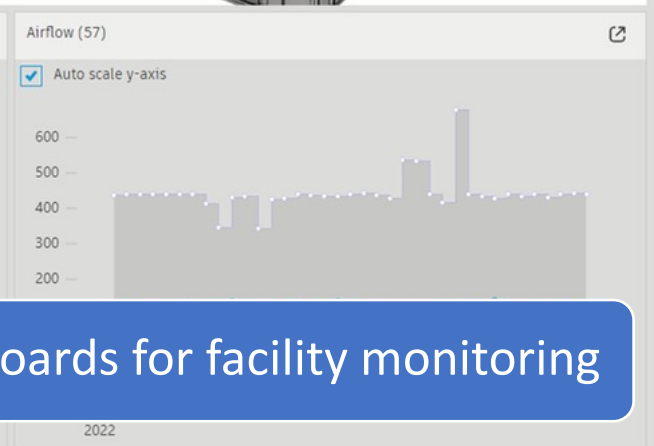
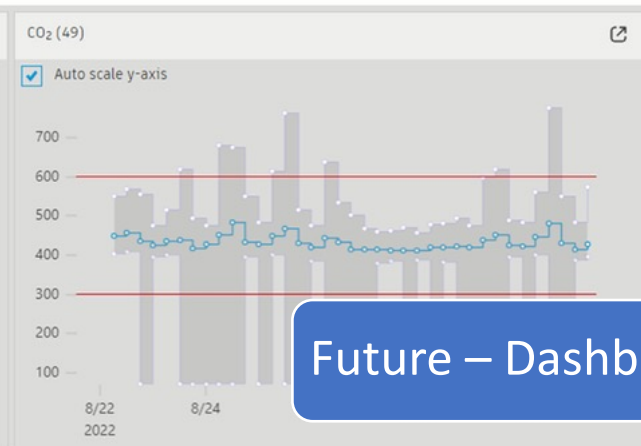
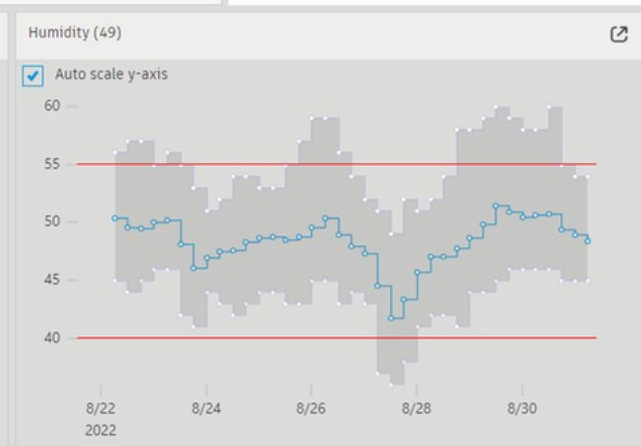
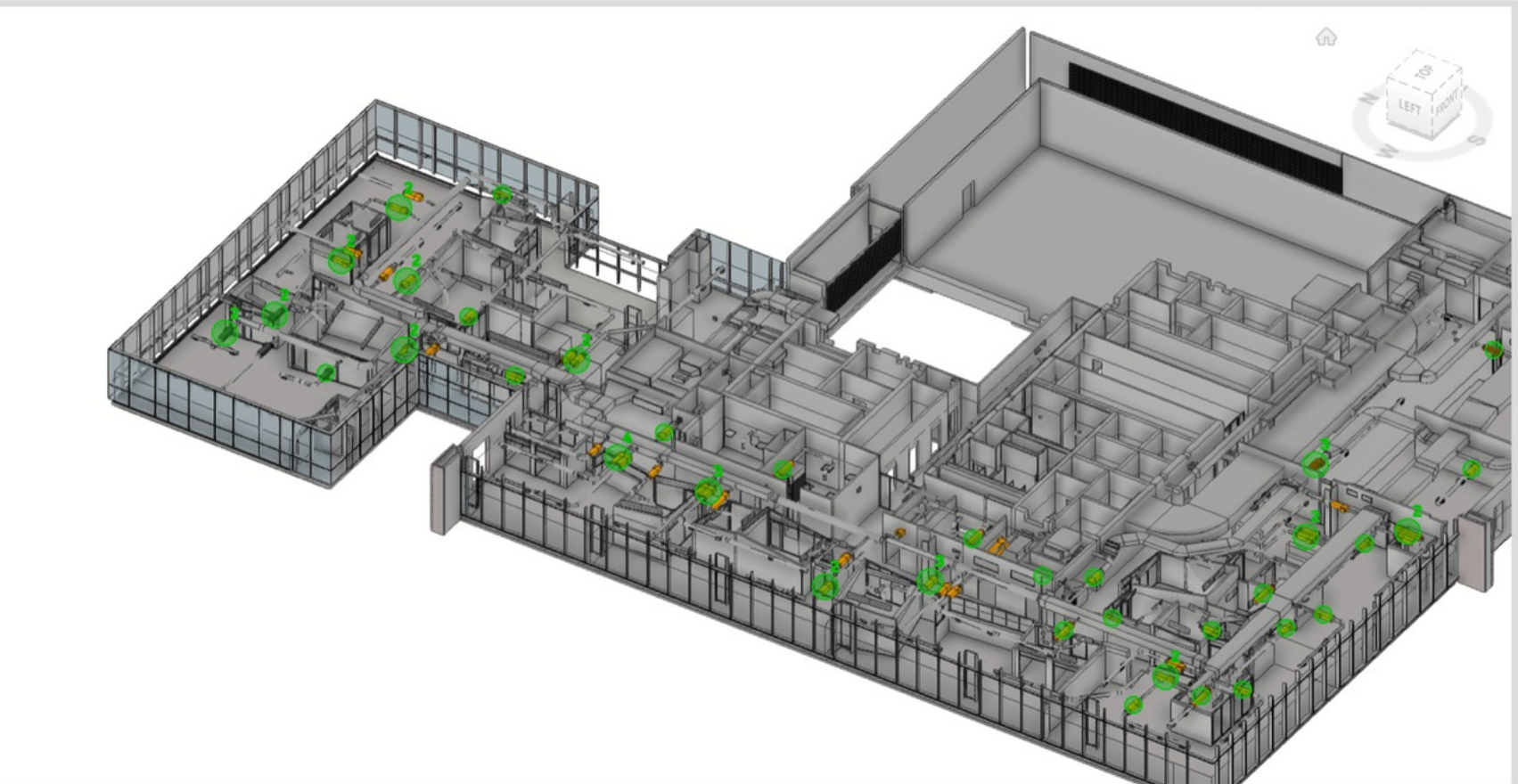
Inventory



Beta - Create Streams for sensor data

Devices (60)

Name	Temperature	Humidity	CO ₂	Airflow
ZNAL01	22.9 °C	37%	442 ppm	135 L/s
ZNAL02	22.8 °C	36%	411 ppm	135 L/s
ZNAL03				183 L/s
ZNAL04	22.9 °C	37%	425 ppm	104 L/s
ZNAL05	22.9 °C	35%	430 ppm	59 L/s
ZNAL06				
ZNAL07	22.8 °C	37%	408 ppm	117 L/s
ZNAL08				
ZNAL09	22.7 °C	36%	403 ppm	72 L/s
ZNAL10	22.4 °C	38%	411 ppm	59 L/s
ZNAL11	22.7 °C	36%	413 ppm	88 L/s
ZNAL12	21.9 °C	38%	411 ppm	168 L/s
ZNAL13	22.5 °C	37%	403 ppm	73 L/s
ZNAL14	22 °C	38%	420 ppm	59 L/s
ZNAL15	22.7 °C	36%	420 ppm	58 L/s
ZNAL16	22 °C	38%	420 ppm	75 L/s



Future – Dashboards for facility monitoring

Benefits



Know your buildings inside out

- Holistic view of building design and current operating performance
- Visualize valuable data generated from smart building technologies
- Collection, connection and contextualization of this data.



Right data at the right time

- Reduce time spent searching for data in disparate systems.
- Act at a moment's notice with building's real-time operations data and historical performance
- Discover assets, spaces, and systems that need your attention



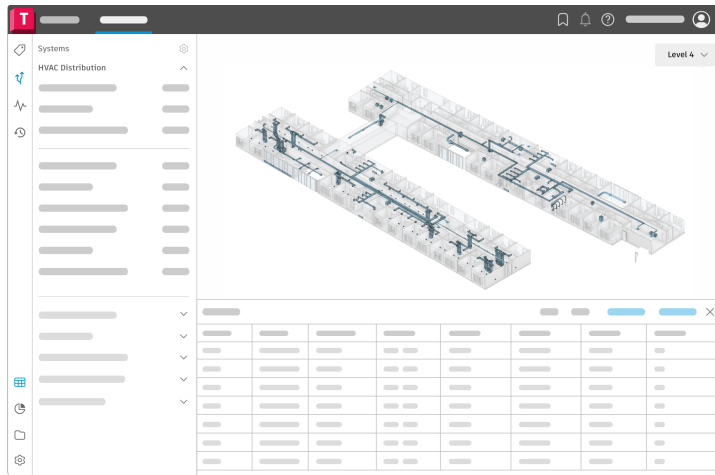
Unlock actionable insights

- Simplify complexity with preconfigured views of the data that matters most
- Dive into data, review heat maps, and analyze figures to draw meaningful conclusions.
- Set goals with confidence, improve operations, and maximize ROI

Autodesk Tandem Roadmap

Now

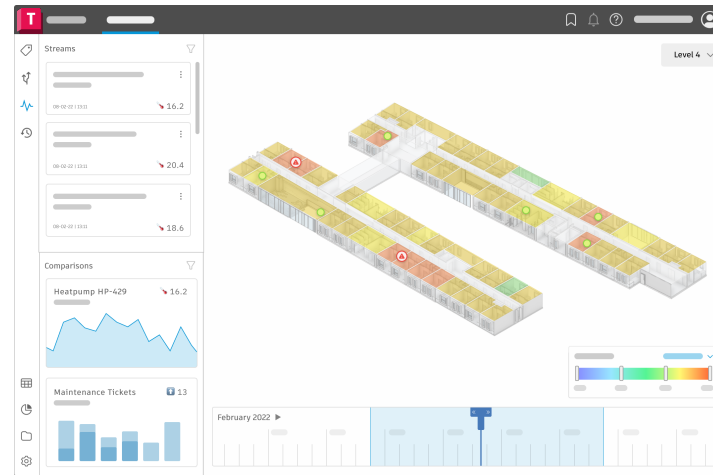
Twin Building Descriptive Twin



- Structure, gather, manage, and verify facility data
- Automate ontological relationships allowing for refinement
- Integrate operational systems (**BETA SOON**)

Next

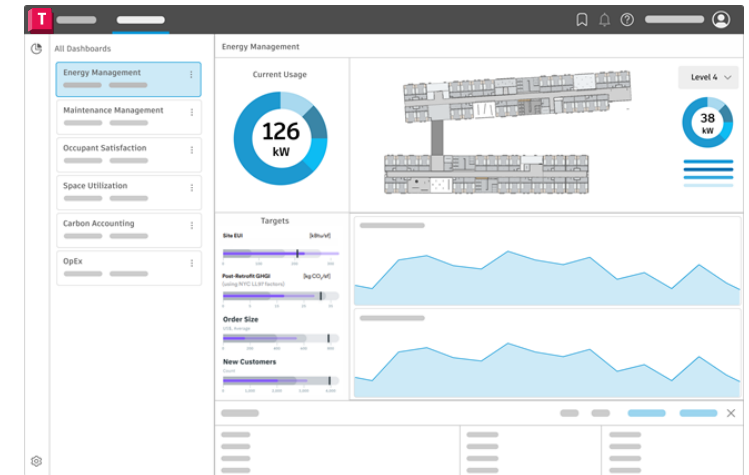
Facility Monitoring Informative Twin



- Simplified user experience for operations (**BETA SOON**)
- Preconfigured views of operations data in context for exploratory analysis (**BETA SOON**)
- Configurable dashboards for actionable insights

Later

Portfolio Optimizing Predictive Twin

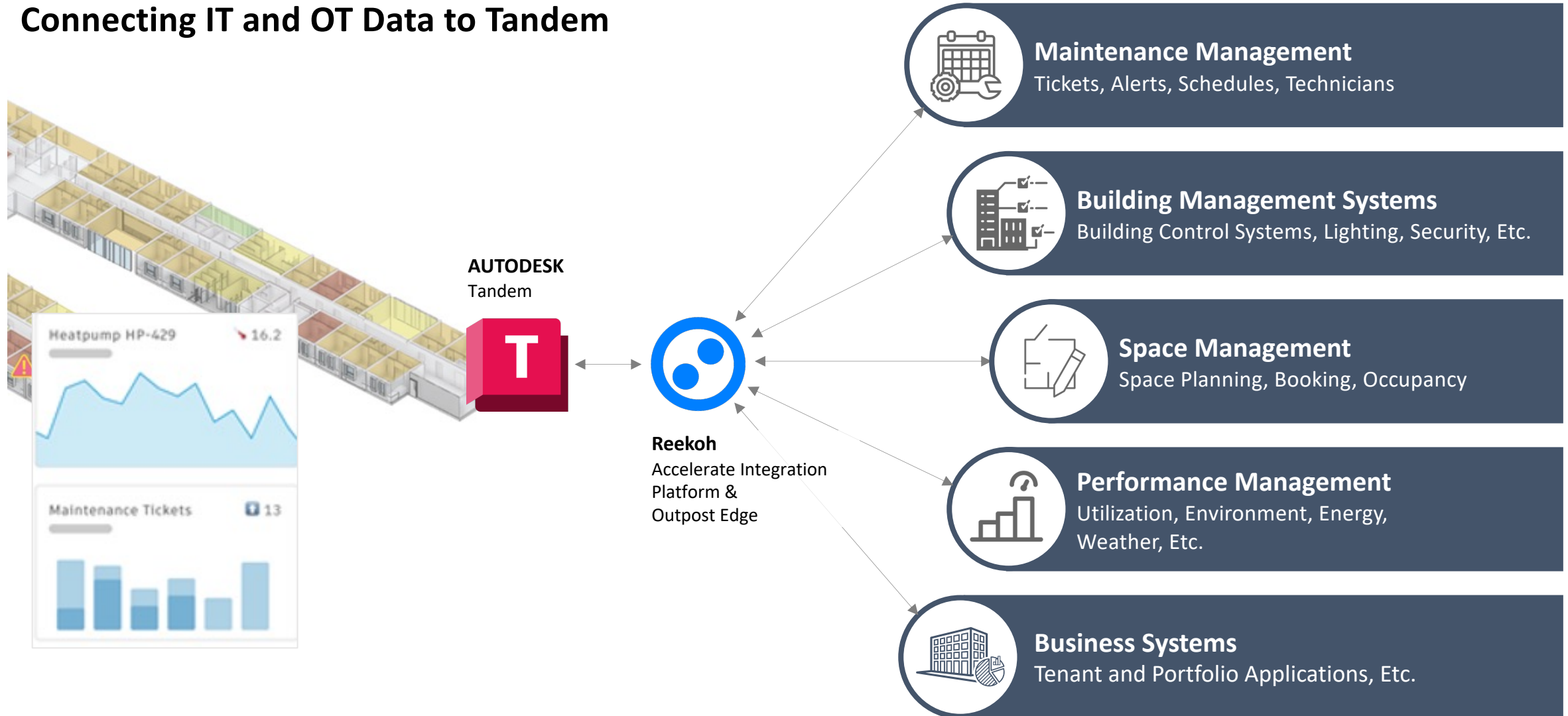


- Ability to roll-up and view data across your portfolio of facilities
- Analytics to predict future events and suggest actions for tuning operational efficiency



Tandem + Reekoh = Tandem Connect

Connecting IT and OT Data to Tandem



Getting Started with Autodesk Tandem



It takes just two minutes to sign up for an account—and it's free.

[Sign up for free](#)

- No User Limits
- No Facility Limits
- Up to 1,000 tagged assets



Stay in touch with the digital twin journey through updates and webinars.

[Subscribe now](#)

- Webinar invitations
- Updates on Tandem



Autodesk Tandem

A digital twin cloud-based technology solution for AEC firms, Owners & Operators - by Autodesk
Software Development · 1,443 followers

- Updates on Tandem
- Webinar invitations
- Digital twin information

intandem.autodesk.com/contact-us/

linkedin.com/autodesktandem/



Denmark · Germany · Iceland · Norway · Sweden · The Netherlands · Italy · Spain

Hvorfor trenger du en digital tvilling

- Forutsi systemfeil før de oppstår,
- Utføre «hva-hvis»-simuleringer og gi rik innsikt i driften, ytelsen og bruken av den bygde ressursen.
- Koble sammen ulike informasjons- og beslutningssystemer for å ta bort silotenking og tilgjengeliggjøre kritiske data
- Den akkumulerte kunnskapen kan brukes til å planlegge fremtidige prosjekter og forbedre designbeslutninger for bedre ROI.

Tips å ta med

- Er du eier
 - Still krav til overlevering av en digital tvilling fra din entreprenør.
 - Det er du som betaler for den flotte modellen som i snitt går 95% ubrukt gjennom livsløpet til dine bygg
- Er du rådgiver eller entreprenør – se fortetningsmuligheten som ligger her – dette er verdiskapende for alle parter
- I et miljøperspektiv må denne næringen ta alvorlige grep og som eier er det å få kontroll på og bruke data aktivt et godt grep på veien til betydelig lavere utslipp og sløseri

Spørsmål

- Møt oss i utstillingen for en prat og svar på spørsmål
- Der kan også uforpliktende møter bookes

- Takk for oss